



DIVA
www.diva.com.tw

DIVA

HMI & Touch

6 Series Industrial Displays

#ABOUT DIVA

#COMPANY OVERVIEW

#CORE VALUES

#PRODUCTS & SERVICES

Overview

DIVA has over two decades of experience delivering high-quality, precision medical & industrial displays, meeting our worldwide customers' strict requirements.

2019
[AWARD]

DIVA won the "Supplier of the Year" from GE Healthcare during the Annual Supplier Summit in Waukesha, WI- May, 16, 2019



Core Values

Quvality Watchdog

Revision and Inventory Control Management

Medical/Industrial LCD Designer & Manufacturer

Engineering Service

System Integrator

Products & Services

Monitors



Radiology displays



Endo/Surgical displays



Touch displays

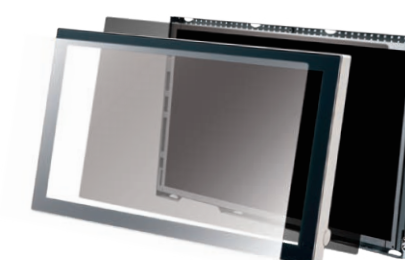
OEM/ODM Solutions

Monitor (Customized and NPI)

- *Appearances
- *Optical Bonding
- *Panel Enhancement
- *Mainboard
- *Others

AIO (All-in-One PC)

Others



Peripherals



Multi-Display Manager(MDM)



Universal Auto Calibration Device (UACD)

Features



Symbols in subsequent display descriptions Available Optional

Medical Ready



Medical proven with medical safety/standard. Product design that fits clinician needs (clinical user-friendly).

Touch Technology



Almost all DIVA Displays can be equipped with touchscreens based on various sensing technologies like Resistive, SAW and PCAP. Our advanced touch controller designs support multi-touch (up to 10 points), gloved hand touch and provide excellent performance in high ESD and EMC environments (depending on the touch technology chosen).

Protective Glass



All the DIVA display models with cover glass may be equipped with chemically strengthened glass. It's a type of safety glass that holds together when shattered. In the event of breakage, it can hold in place. With 9H hardness level, it prevents the screen from being scratched even with a sharp objects such as knife.

Ingress Protection, Disinfection



Touch solutions used in medical, industrial and commercial applications must meet a variety of health and safety requirements. The front panel of DIVA Standard and Touch Displays meets protection up to IPX5, depending on the actual configuration. This ensures easy disinfection and protection against fluid ingress.

Surface AR/AG Coating



DIVA Displays can have multi-layer AG or AR coating process on the protective cover glass, ensures clear crisp images and offers a comfort viewing experience. AG (Anti-glare) coating models often use for under brighter ambient light places such as outdoor or window side. It can reduce the discomfort caused by specular reflection (the glare). AR (Anti-reflection) coating on the cover glass improves the sharpness and contrast ratio. AR coating can make the image appears more vivid.

Fanless Design



A fanless design reduces the accumulation of microscopic bacteria and dust inside the display and the potential for their dispersion to the surgical field and open back tables. It also contributes to a silent working environment and increases system reliability while at the same time decreasing energy consumption.

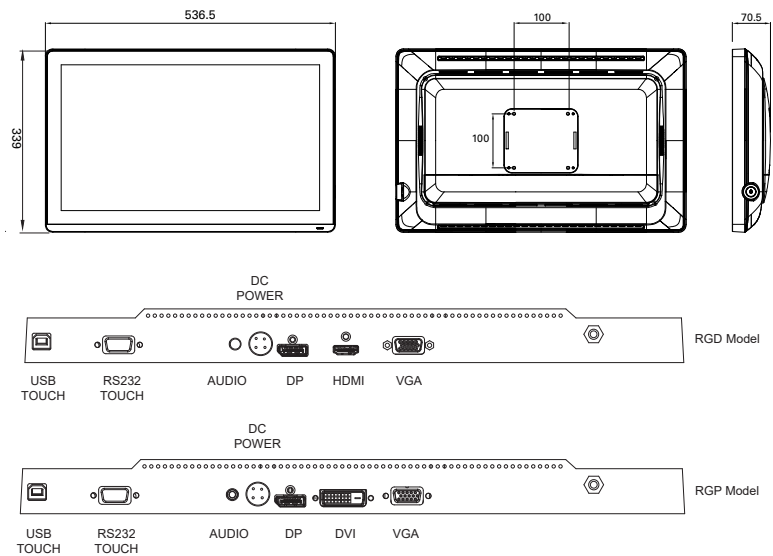
Dynamic Scaling



Dynamic Scaling ensures high fidelity, distortion free visualization and precise video and image representation regardless of the native picture format. Numerous adjustment options are available: Full/ Auto/ Width Fit/Height Fit/ 16:10/ 16:9/ 4:3/ 1:1 (actual options vary).

21.5" FHD

RGD2161A-P (Industrial)



Sketches showing VESA mounting without stand version.
(Unit: mm)

The 21.5-inch industrial control touch display has a 1920 x 1080 resolution. It is covered with a single piece of glass to create a TrueFlat touch surface that supports 10-point touch. The configuration of the electronic components in the structure is optimized, and the holes that affect the airtightness and integrity are fully integrated to make the appearance of the product thin while retaining good cooling functionality.

The front frame is IP65-rated waterproof and dust-proof. Comes with a VESA 100 x 100 wall mount standard while offering an optional 200 x 100 adapter plate users can purchase, this new product is practical yet concealed, beautiful, and waterproof.



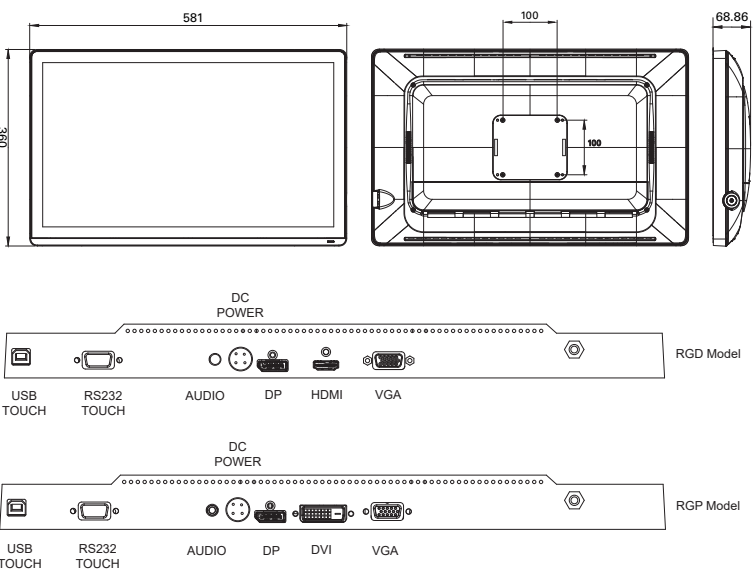
Model Name		RGD2161A-P	Optional
ID Type		True Flat(P-Cap)	-
Panel Spec	Type	AHVA	-
	Resolution	1920(H)x1080(V)	-
	Screen Size (inch)	21.5	-
	Display Area (mm)	476.06(H)x267.79(V)	-
	Pixel Pitch (mm)	0.248(H)x0.248(V)	-
	Viewing Angle (degree)	178(H)/178(V)	-
	Response Time (ms)	22 (On/Off)	-
	Brightness (cd/²)	250 (Typ.)	-
	Contrast Ratio	1000:1 (Typ.)	-
	Color Depth (bits)	8	-
I/O Interface	DVI	N/A	DVI-Dx1
	DP	DP1.2x1	-
	VGA	D-Sub15x1	-
	HDMI	HDMI1.4x1	-
	USB	N/A	-
	Audio	3.5mm	-
	Interface	Combo(USB/RS232)	-
Touch/Glass	Type	P-Cap	-
	Touch Point	10	-
	Screen Printing	Black	-
	Glass Coating	Clear	-
	Interface	Combo(USB/RS232)	-
	Color Temperature	Neutral/Warm/Cool/User	-
	Gamma Selection	Neutral/2.2	-
Features	Gamma LUT (bits)	10	-
	OSD Languages	English/French/German/Italian/Spanish/Japanese	-
	Speaker	2W Speaker	-
	Scaling Mode	Full/5:4/3:16:9/1:1	-
	Power Supply	DC 12V	-
	Power Consumption (W)	40(Max)	-
	Dimensions (WxHxD) (mm)	537x387x175(with Stand) 537x339x69 (w/o Stand)	-
Physical Characteristics	VESA Mounting (mm)	100x100	-
	Weight (Kg)	8.2 (with Stand) 6.5 (w/o Stand)	-
	ID Color	Black	White
	IP Rating (Front)	IP65	-
	IP Rating (Back Cover)	IPx1	-
	Tilt Range (degree)	0~+30	-
	Pivot Range (degree)	N/A	-
Reliability	Swivel Range (degree)	N/A	-
	Height Adjustment (mm)	N/A	-
	Operating Temperature(°C)	10 to 40	-
	Operating Humidity (RH)	30% to 75%	-
	Storage Temperature (°C)	-20 to 60	-
	Storage Humidity (RH)	10% to 90%	-
	Storage Humidity (RH)	10% to 90%	-
Certifications and Compliances		cTUVus(UL 62368-1;CAN/CSA-C22.2 62368-1), CB(IEC 62368-1),CE (EN55032;EN55024;EN 62368-1), FCC Part 15,ROHS,WEEE	-

24" FHD

RGD2461A-P (Industrial)



6 Series ID



Sketches showing VESA mounting without stand version.
(Unit: mm)

The 24-inch industrial control touch display has a 1920 x 1080 resolution. It is covered with a single piece of glass to create a TrueFlat touch surface that supports 10-point touch. The configuration of the electronic components in the structure is optimized, and the holes that affect the airtightness and integrity are fully integrated to make the appearance of the product thin while retaining good cooling functionality.

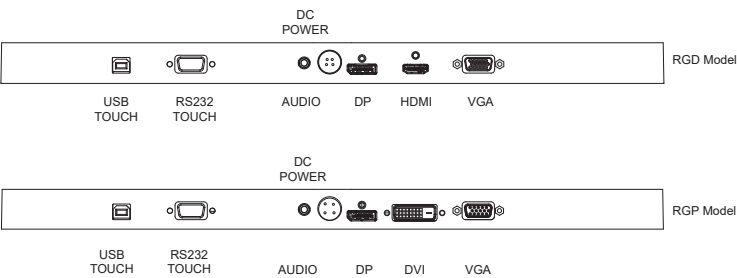
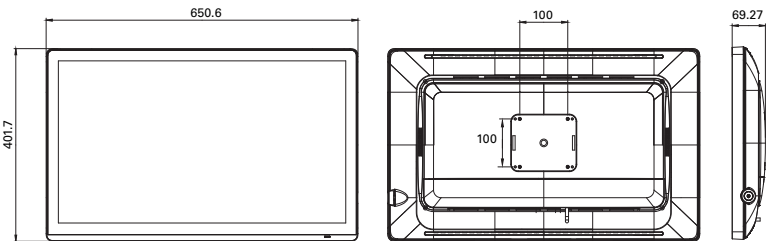
It's front frame is IP65-rated waterproof and dust-proof. Comes with a VESA 100 x 100 wall mount standard while offering an optional 200 x 100 adapter plate users can purchase, this new product is practical yet concealed, beautiful, and waterproof.



Model Name		RGD2461A-P	Optional
ID Type		True Flat(P-Cap)	-
Panel Spec	Type	RGD2461A-P	-
	Resolution	1920(H)x1080(V)	-
	Screen Size (inch)	21.5	-
	Display Area (mm)	476.06(H)x267.79(V)	-
	Pixel Pitch (mm)	0.248(H)x0.248(V)	-
	Viewing Angle (degree)	178(H)/178(V)	-
	Response Time (ms)	22 (On/Off)	-
	Brightness (cd/²)	250 (Typ.)	-
	Contrast Ratio	1000:1 (Typ.)	-
I/O Interface	Color Depth (bits)	8	-
	DVI	N/A	DVI-Dx1
	DP	DP1.2x1	-
	VGA	D-Sub15x1	-
	HDMI	HDMI1.4x1	-
	Audio	3.5mm	-
Touch/Glass	Type	P-Cap	-
	Touch Point	10	-
	Screen Printing	Black	-
	Glass Coating	Clear	-
	Interface	Combo(USB/RS232)	-
Features	Color Temperature	Neutral/Warm/Cool/User	-
	Gamma Selection	Neutral/2.2	-
	Gamma LUT (bits)	10	-
	OSD Languages	English/French/German/Italian/Spanish/Japanese	-
	Speaker	2W Speaker	-
	Scaling Mode	Full/5:4/4:3/16:9/1:1	-
	Power Supply	DC 12V	-
Power Requirements	Power Consumption (W)	40(Max)	-
	Dimensions (WxHxD) (mm)	581x400x175(with Stand) 581x360x69(w/o Stand)	-
Physical Characteristics	VESA Mounting (mm)	100x100	-
	Weight (Kg)	9.5 (with Stand) 7.7 (w/o Stand)	-
	ID Color	Black	White
	IP Rating (Front)	IP65	-
	IP Rating (Back Cover)	IPx1	-
	Tilt Range (degree)	0~+30	-
	Pivot Range (degree)	N/A	-
	Swivel Range (degree)	N/A	-
	Height Adjustment (mm)	N/A	-
	Operating Temperature(°C)	10 to 40	-
	Operating Humidity (RH)	30% to 75%	-
	Storage Temperature (°C)	-20 to 60	-
Reliability	Storage Humidity (RH)	10% to 90%	-
	Certifications and Compliances	cULus(UL 62368-1;CAN/CSA-C22.2 62368-1),CB(IEC 62368-1),CE (EN55032; EN55024;EN 62368-1),FCC Part 15,VCCI, ROHS,WEEE	-

27" FHD

RGD2761A-P (Industrial)



Sketches showing VESA mounting without stand version.
(Unit: mm)

The 27-inch industrial control touch display has a 1920 x 1080 resolution. It is covered with a single piece of glass to create a TrueFlat touch surface that supports 10-point touch. The configuration of the electronic components in the structure is optimized, and the holes that affect the airtightness and integrity are fully integrated to make the appearance of the product thin while retaining good cooling functionality.

The front frame is IP65-rated waterproof and dust-proof. Comes with a VESA 100 x 100 wall mount standard while offering an optional 200 x 100 adapter plate users can purchase, this new product is practical yet concealed, beautiful, and waterproof.



Model Name		RGD2761A-P	Optional
ID Type		True Flat(P-Cap)	-
Panel Spec	Type	VA	-
	Resolution	1920(H)x1080(V)	-
	Screen Size (inch)	27	-
	Display Area (mm)	597.6(H)x336.1(V)	-
	Pixel Pitch (mm)	0.311(H)x0.311(V)	-
	Viewing Angle (degree)	178(H)/178(V)	-
	Response Time (ms)	12 (On/Off)	-
	Brightness (cd/²)	300 (Typ.)	-
	Contrast Ratio	3000:1 (Typ.)	-
I/O Interface	Color Depth (bits)	8	-
	DVI	N/A	DVI-Dx1
	DP	DP1.2x1	-
	VGA	D-Sub15x1	-
	HDMI	HDMI1.4x1	N/A
	USB	N/A	-
	Audio	3.5mm	-
Touch/Glass	Type	P-Cap	-
	Touch Point	10	-
	Screen Printing	Black	-
	Glass Coating	Clear	-
	Interface	Combo(USB/RS232)	-
Features	Color Temperature	Neutral/Warm/Cool/User	-
	Gamma Selection	Neutral/2.2	-
	Gamma LUT (bits)	10	-
	OSD Languages	English/French/German/Italian/Spanish/Japanese	-
	Speaker	2W Speaker	-
	Scaling Mode	Full/5:4/4:3/16:9/1:1	-
	Power Supply	DC 12V	-
Power Requirements	Power Consumption (W)	40(Max)	-
Physical Characteristics	Dimensions (WxHxD) (mm)	651x441x175(with Stand) 651x402x69(w/o Stand)	-
	VESA Mounting (mm)	100x100	-
	Weight (Kg)	10.3 (with Stand) 8.4 (w/o Stand)	-
	ID Color	Black	White
	IP Rating (Front)	IP65	-
	IP Rating (Back Cover)	IPx1	-
	Tilt Range (degree)	0~+30	-
	Pivot Range (degree)	N/A	-
	Swivel Range (degree)	N/A	-
	Height Adjustment (mm)	N/A	-
Reliability	Operating Temperature(°C)	10 to 40	-
	Operating Humidity (RH)	30% to 75%	-
	Storage Temperature (°C)	-20 to 60	-
	Storage Humidity (RH)	10% to 90%	-
Certifications and Compliances		cTUVus(UL 62368-1;CAN/CSA-C22.2 62368-1),CB(IEC 62368-1),CE (EN55032; EN55024;EN 62368-1),FCC Part 15,ROHS, WEEE	-

DIVA Laboratories

Headquarters

DIVA Laboratories Ltd. (Taiwan)

Phone: +886 2 2226 8631

Mail: divamkt@diva.com.tw

9F., No.351, Sec. 2, Zhongshan Road,
Zhonghe District, New Taipei City 235029,
Taiwan

Europe

DIVA Laboratories GmbH (Germany)

America

DIVA Laboratories US, LLC (NH, USA)

China

Suzhou DIVA Lab. Inc (SZ, China)

416A, Boji.Suyinzhizao, No.39, Qihong Rd.,
SIP, Suzhou, Jiangsu, China

v20220923

DIVA Optik View

www.optikview.com

www.diva.com.tw

HMI & TOUCH